



ROADLIGHTING | 2014 | Auckland, New Zealand

Westpac
Institutional Bank



Dr Rune Elvik

Chief Research Officer, Institute of Transport Economics,
Norway

The economic value of good Road Lighting

ROADLIGHTING | 2014 | Auckland, New Zealand

Westpac
Institutional Bank

The economic value of good Road Lighting

Professor Rune Elvik
Chief Research Officer
Institute of Transport Economics, Norway

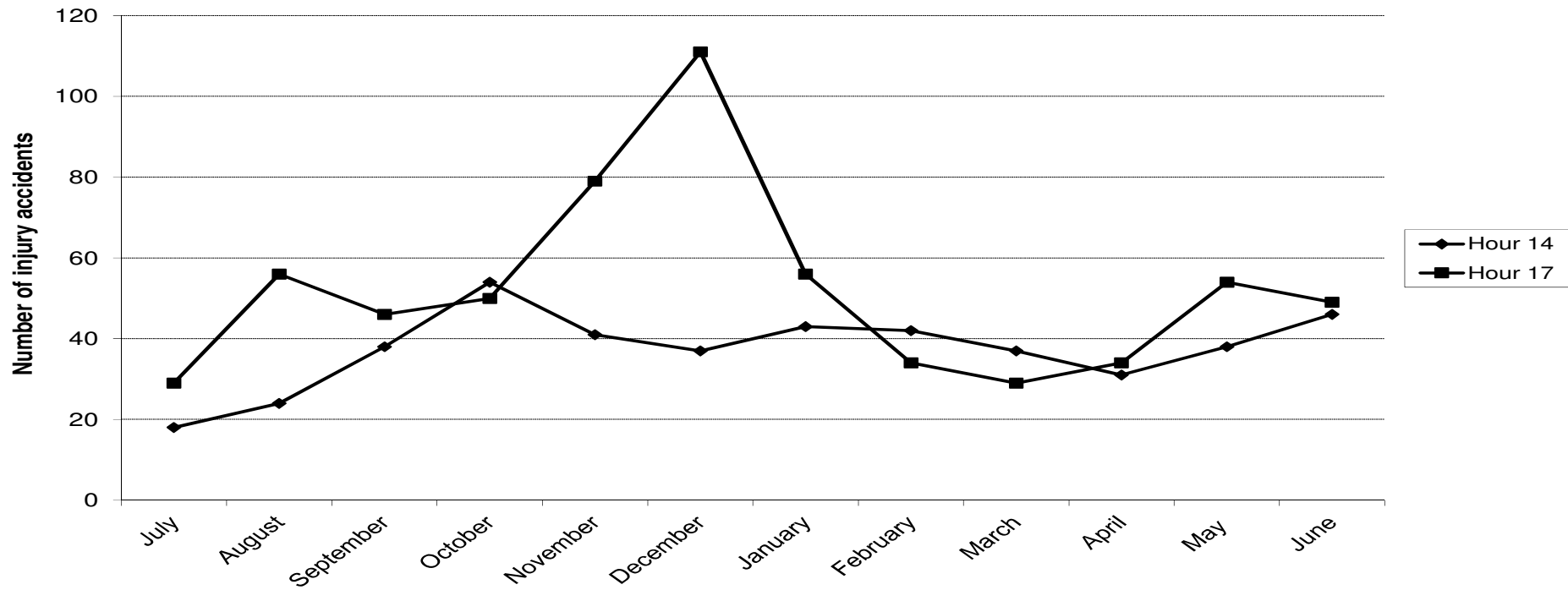
Highlights

- Road lighting greatly improves safety
- It is effective in all traffic environments
- Effects have been found in many countries
- Road lighting also reduces crime
- Road lighting improves mobility at night
- Road lighting is very cost-effective

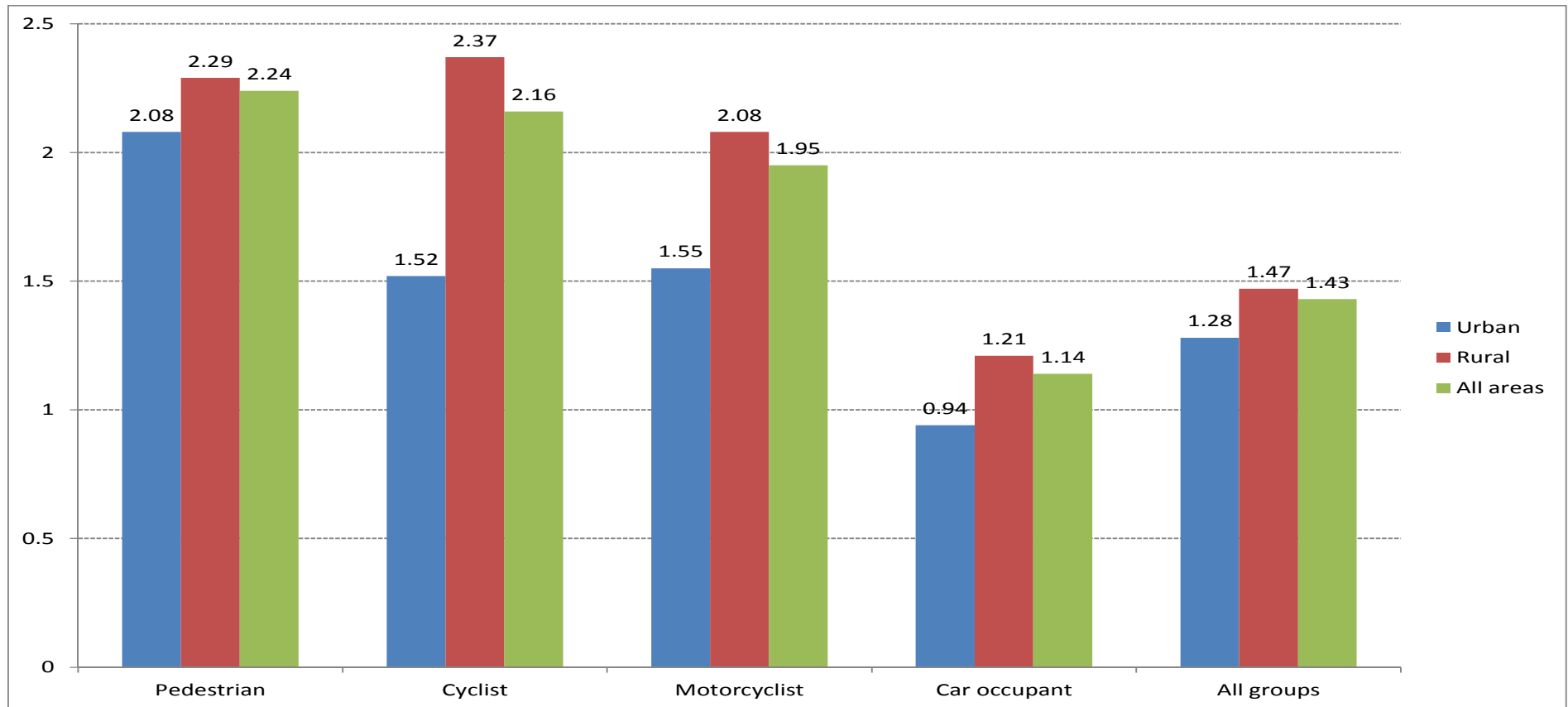
Accident risk increases in darkness

- The increase applies to all groups of road users
- It is particularly large for pedestrians
- The risk of fatal accidents increases more than the risk of injury accidents

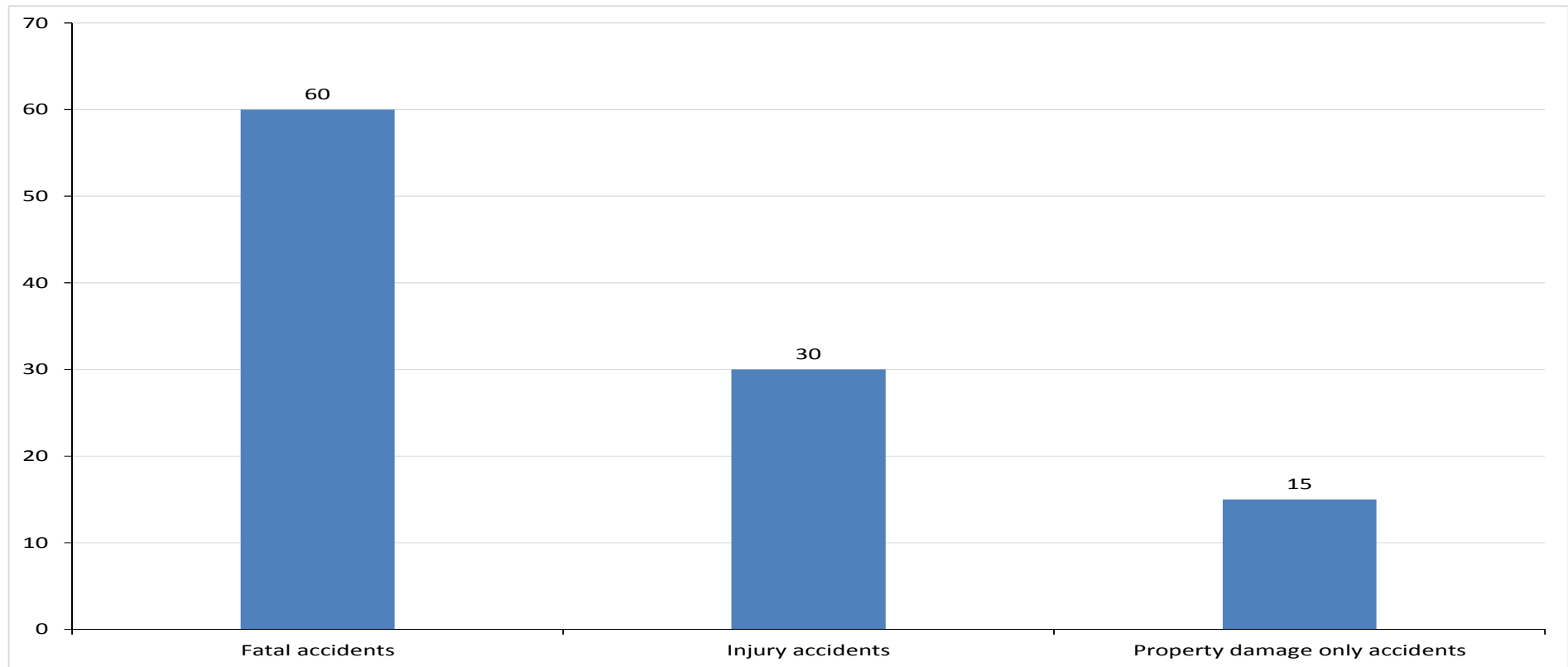
Pedestrian accidents increase in darkness



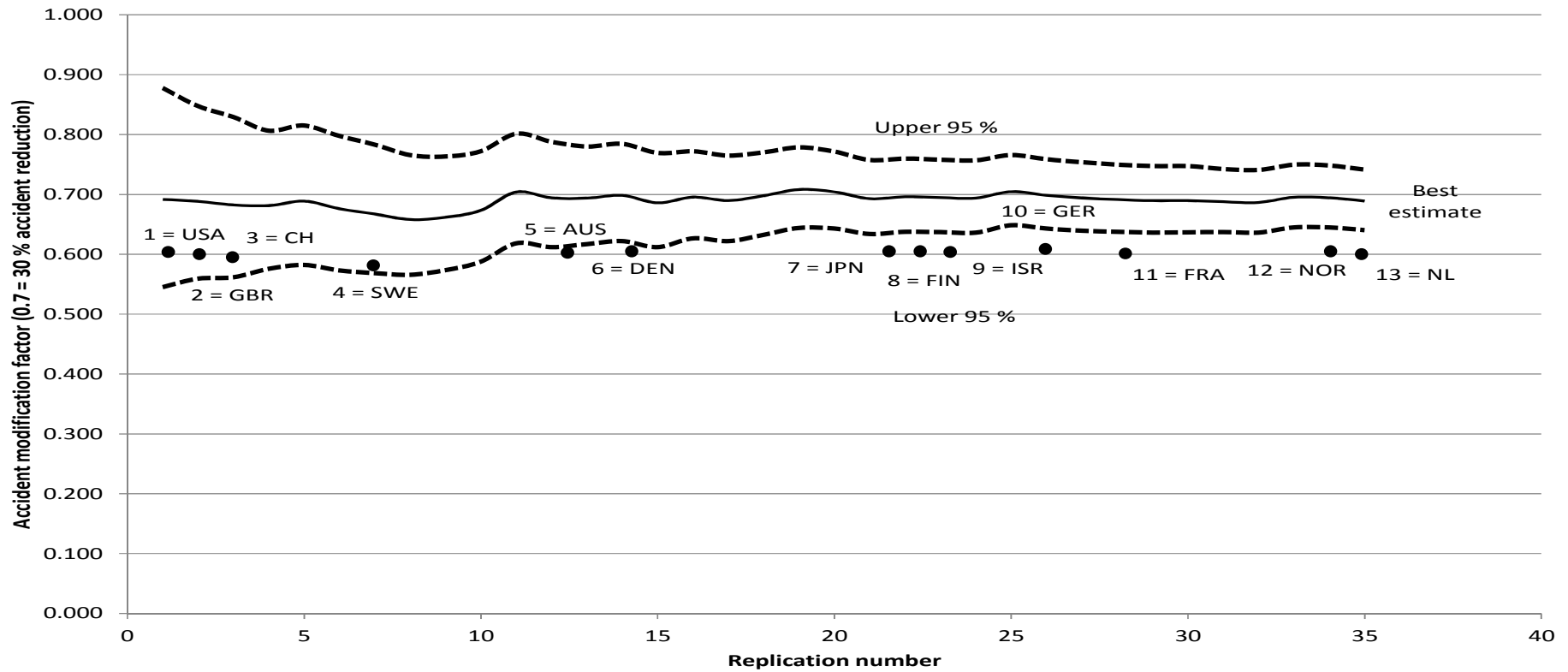
Relative risk in darkness – all groups of road users



Accident reduction by road lighting

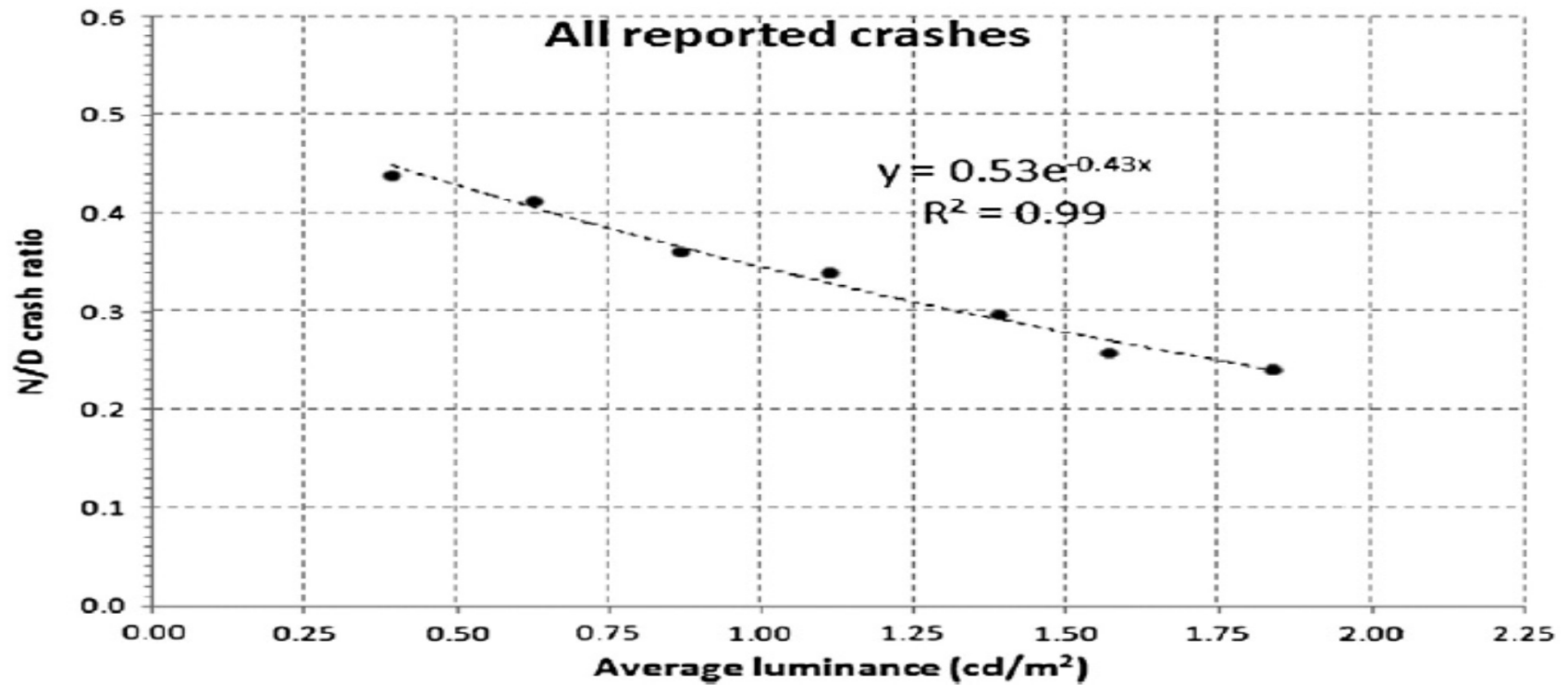


Effects on injury accidents in many countries

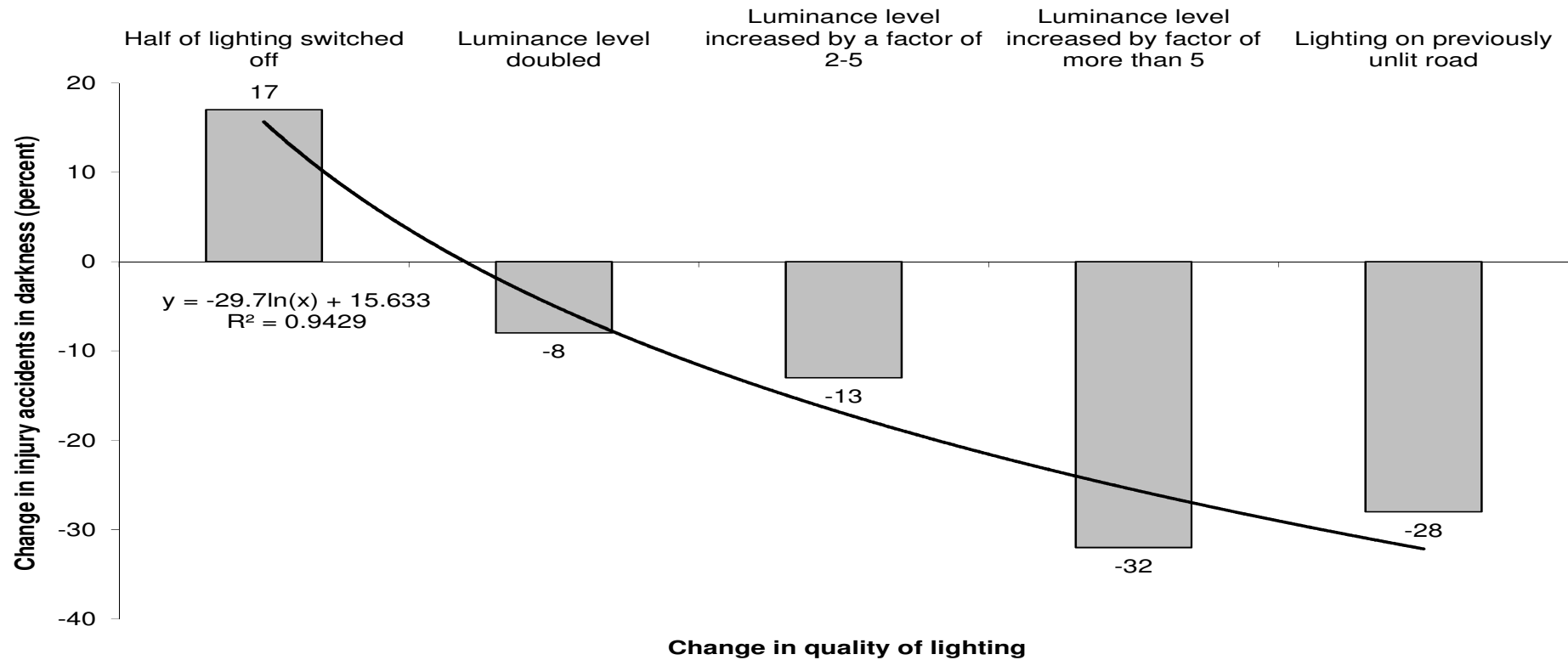


High-quality lighting is more effective than low-quality

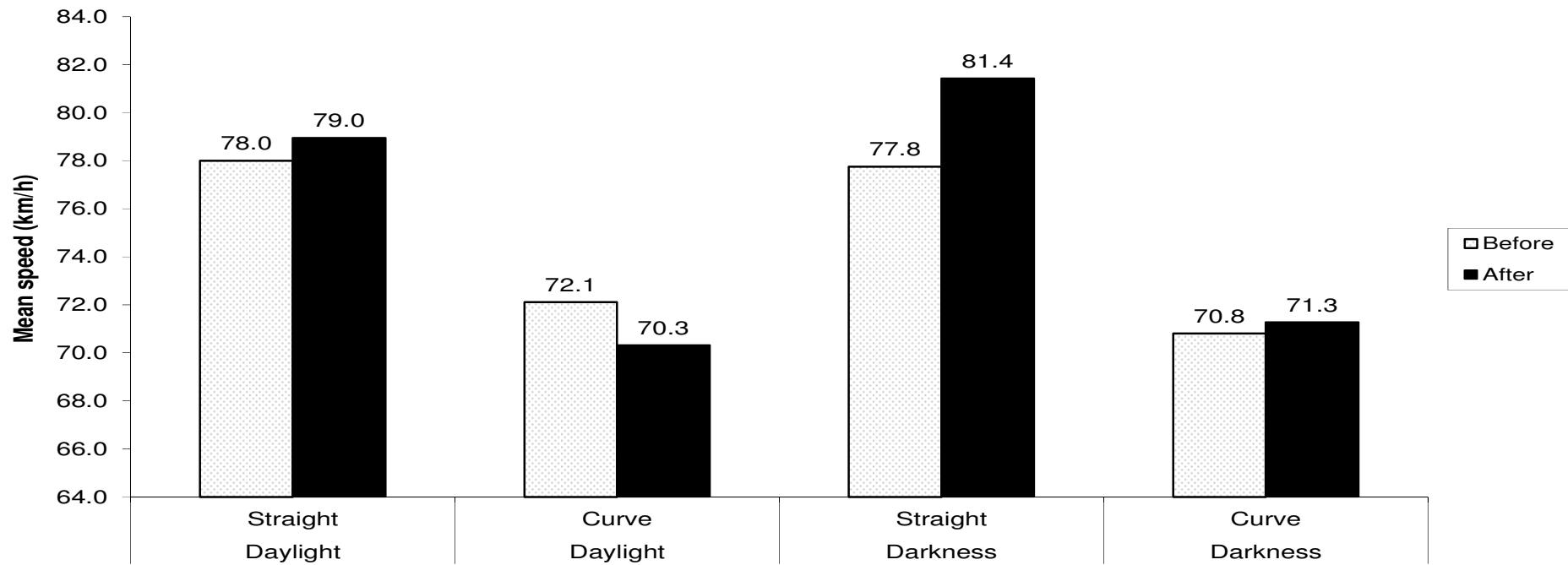
M. Jockett, W. Frith / IATSS Research 36 (2013) 139–145



Reducing or enhancing lighting affects safety



Mobility at night is improved (Norwegian study)



Benefits depend on effects included

