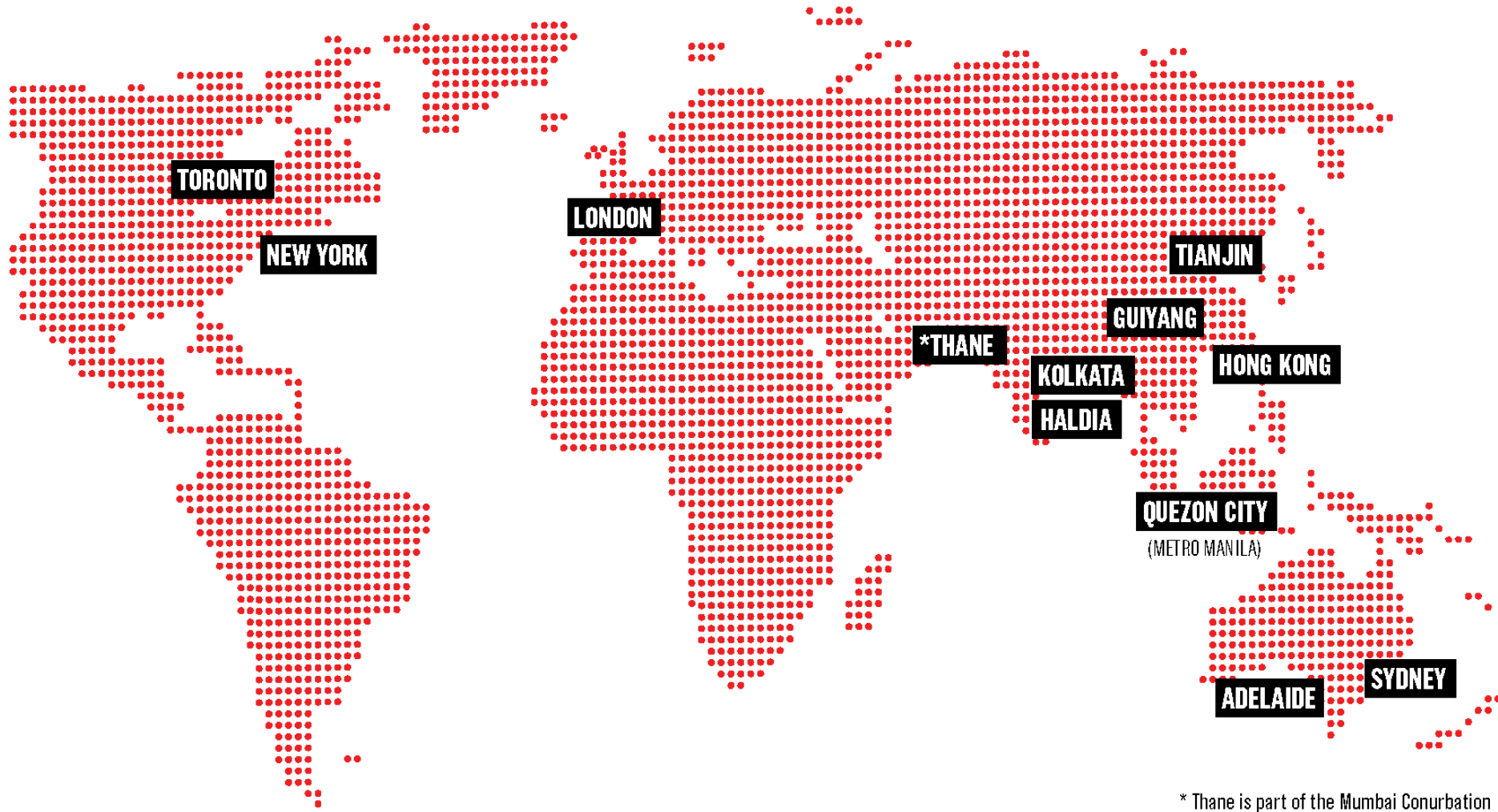


LightSavers Consortium Partners

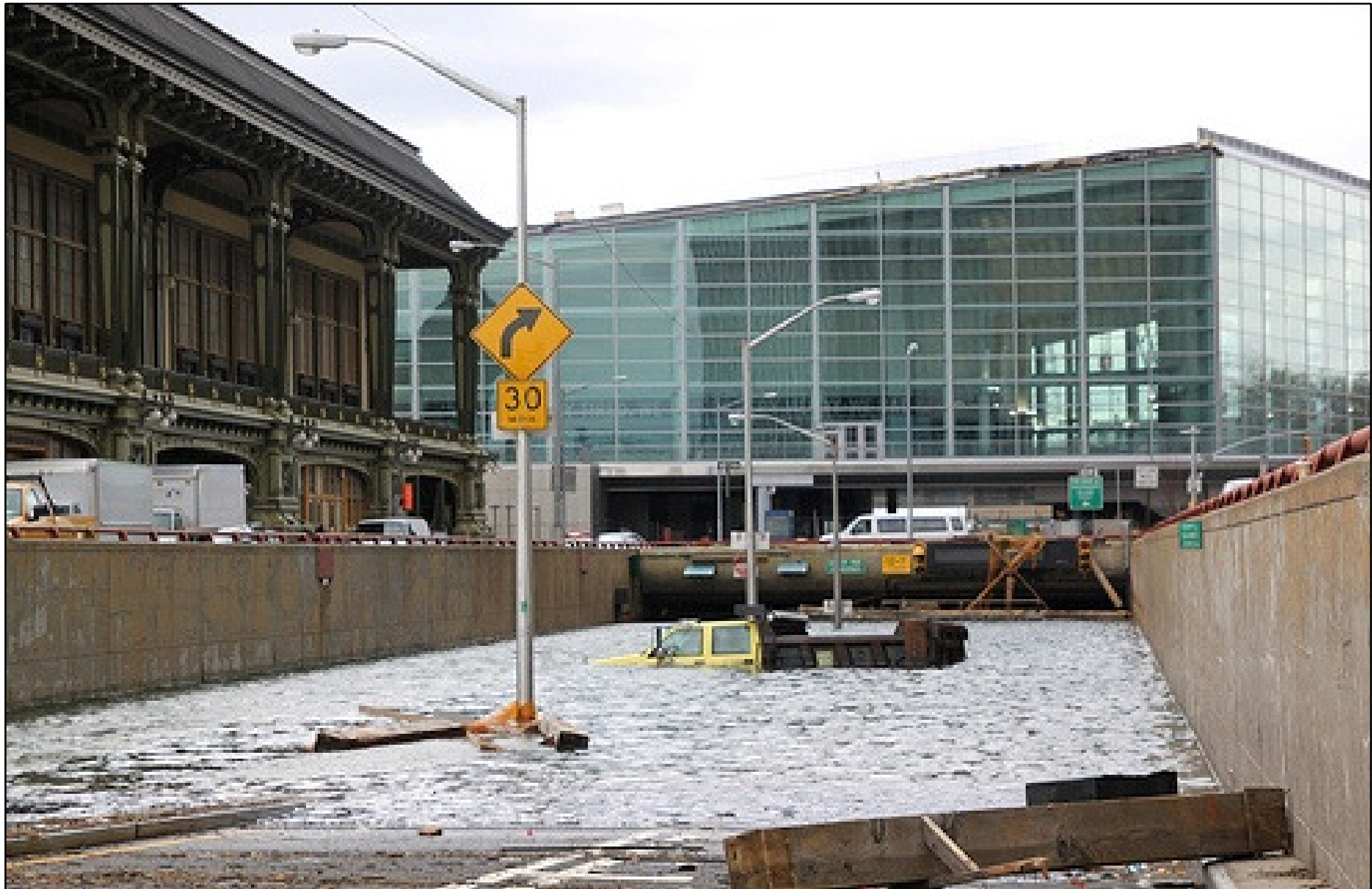


* Thane is part of the Mumbai Conurbation

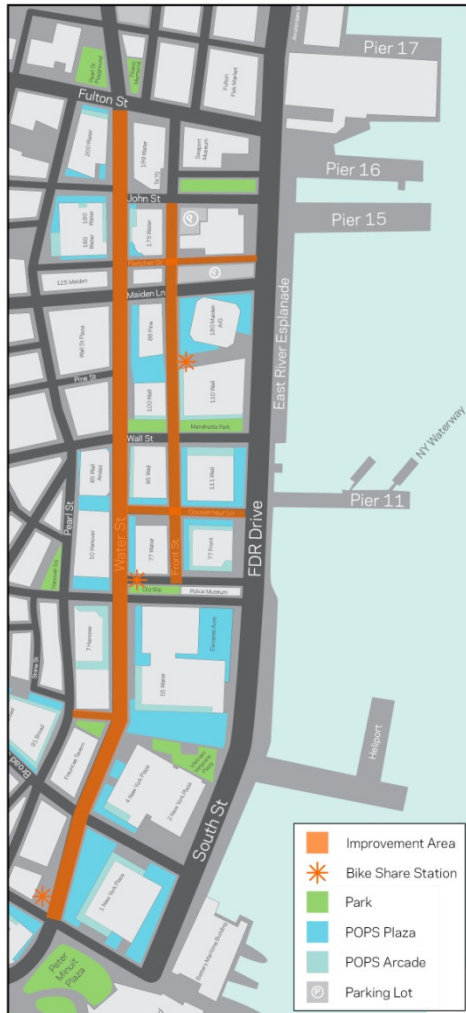


Iwan Baan

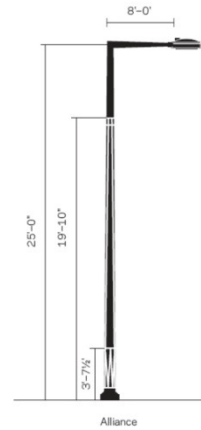
Climate Change



Case Study :: Water Street :: Streetscape Design Toolkit



Lighting



Pedestrian Improvements



Tree Planting



Benches



Moveable Tables/Chairs



Wayfinding

Case Study :: Water Street :: Estimated Costs



Estimated Costs

Streetscape/ Pedestrian Improvements

- Paint/Epoxy Gravel/Markings/Signage
- Benches
- Wayfinding
- Planting/Trees (Parks coordination)

of Units

10
10 to 15

Cost

\$300,000
\$25,000
\$150,000
\$150,000

Total

\$625,000

Lighting

- Water St - Whitehall to Fulton
- Water St - Fulton St to Dover St
- Front St - Old Slip to John St

of Streetlights

60
15
15

Cost

\$745,000
\$227,500
\$227,500

Total

\$1,200,000

Total Project Costs

\$1,825,000

Case Study :: Water Street :: Branding and Identity

Modifying the toolkit elements to brand and promote the local identity

WATER STREET

PURE+APPLIED
MAY 16, 2013



STREET PAINT: Merlot Streetbond with 1 custom Benjamin Moore color (750)

FURNITURE: Carrot by Fermob



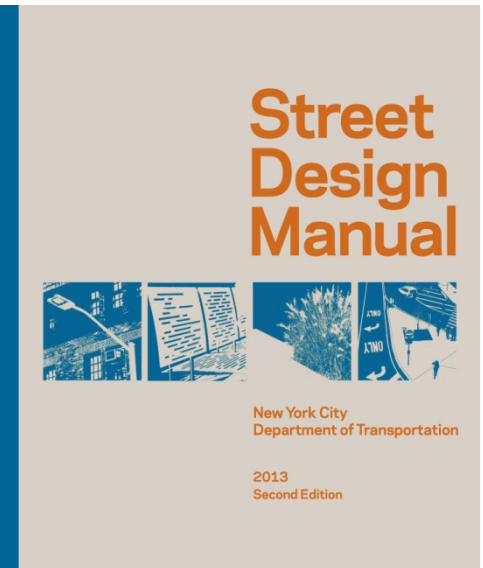
750

Merlot



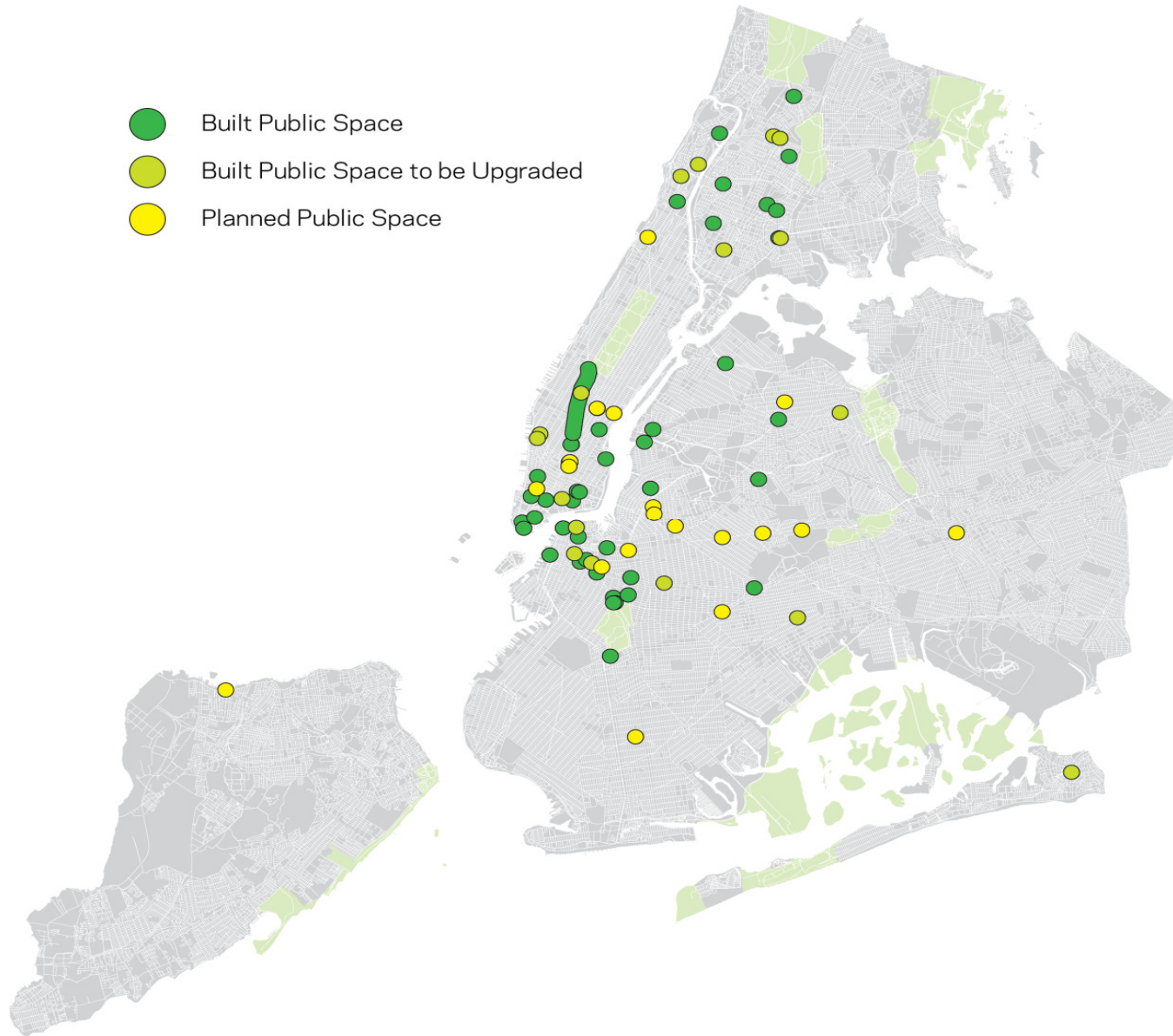
Case Study :: Water Street :: Completed Treatment





Quick Design Strategies :: Projects :: Plaza Program

- Built Public Space
- Built Public Space to be Upgraded
- Planned Public Space



Flatiron 23rd Street Partnership

Existing District Lighting



Historic 5th Avenue Pole



Standard Cobra Head Lamppost



Historic Fifth Avenue Twin Lampposts



Fifth Avenue
1970's Pole



Home Depot Lamppost



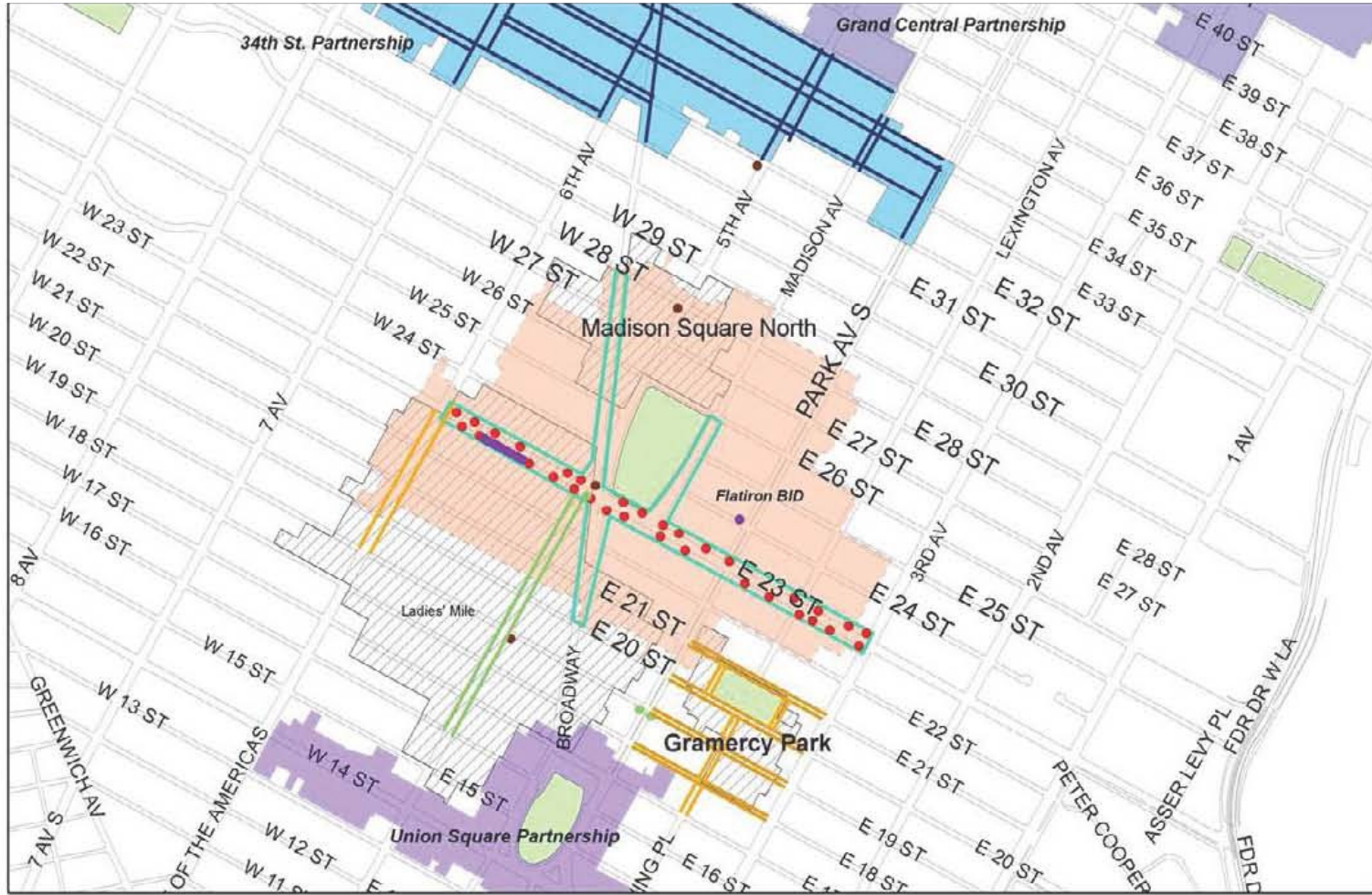
Met Life Building Lampposts



Bishop's Crook Lamppost

Flatiron 23rd Street Partnership

Existing District Lighting



LEGEND

● Cobra Head to be replaced	● Type B Poles	— Bishop's Crook Poles	□ Project Limit
● Metropolitan Poles	● 5th Avenue Poles	— Grand Central Partnership Poles	■ Flatiron BID
		— Metropolitan Poles	▨ Historic Districts

*All areas not specified are Cobra Head

NTS

Quick Design Strategies :: Projects :: Flatiron/23rd Street



Quick Design Strategies :: Projects :: Flatiron/23rd Street



Quick Design Strategies :: Projects :: Bowling Green



Quick Design Strategies :: Projects :: Bowling Green







DOT's Toolkit

Quick Design Strategies :: Complete Streets



Quick Design Strategies :: Temporary Pedestrian Improvements



Quick Design Strategies :: Bike Share



Quick Design Strategies :: Bike Parking



Quick Design Strategies :: Wayfinding



Quick Design Strategies :: CityBench



Quick Design Strategies :: Street Seats



Quick Design Strategies :: Streetscape Vocabulary



Safety



Mobility and Sustainability

